

10/122-126 Park Beach Road Coffs Harbour NSW

3  **2**  **1** 

This townhouse is modern and spacious, with extensive use of glass allowing the northern sun to shine in, creating a wonderful light filled home to enjoy. A short distance from the beach, hotel, bowling club and an array of cafés and restaurants?when location and living your best life matters it starts here!

Architecturally appealing this property offers quality finishes, the galley style kitchen has stone benches, good storage and Bosch appliances. The kitchen, dining and living are open plan and overlook the great outdoor alfresco area and its pretty gardens.

Positioned in a gated complex this home has three bedrooms, master with ensuite and ceiling fans to all of the

[For full version visit the website](https://www.aletacorealty.com/lease/nsw/mid-north-coast/coffs-harbour/residential/townhouse/7485539)

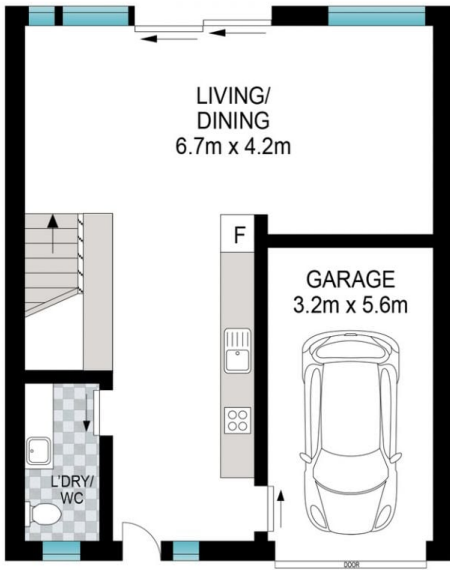
Type : Townhouse
Land Size : 173 sqm
View : <https://www.aletacorealty.com/lease/nsw/mid-north-coast/coffs-harbour/residential/townhouse/7485539>



Natalie Scott
02 6638 9311



Charlotte Gray
(02) 6638 9311



LOWER LEVEL



UPPER LEVEL



Scale in metres. Indicative only. Dimensions are approximate. All information contained herein is gathered from sources we believe to be reliable. However, we cannot guarantee its accuracy and interested persons should rely on their own enquiries.

INT: 115 m²

10/122-126 Park Beach Road, Coffs Harbour

